

**PLASTIC SIDE-OUTLET ROOF
DRAIN WITH OVERFLOW**
Specification Sheet



PART NO.	DESCRIPTION	A	B	C
T-0020	2" ABS-Roof Drain Side Outlet	3.515	2.385	2.385
T-0022	3" ABS-Roof Drain Side Outlet	4.515	3.515	3.515
T-0024	4" ABS-Roof Drain Side Outlet	4.515	3.515	4.515

SPECIFICATION

Furnish and install a combination Side Outlet Roof Drain, overflow and flashing area as one unit, complete with expansion couplings on both primary drain and overflow, made of high impact ABS, manufactured by Tech Specialties or approved equal.

NOTE: ABS Roof Drains with Side Outlet to be used for B.U.R. application

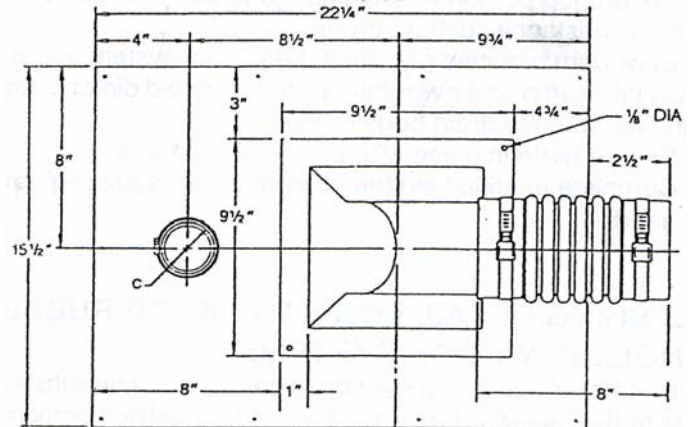
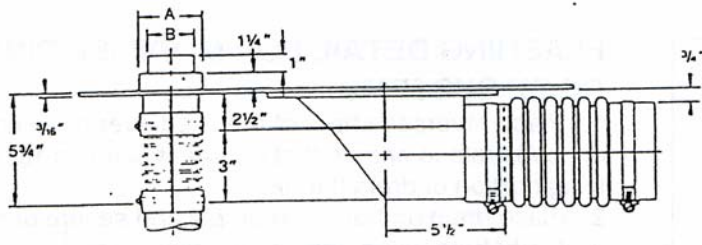
ACCEPTANCES/LISTINGS

These products have been accepted and/or reviewed by:
I.A.P.M.O. File No. 1252, S.B.C.C.I PST Report No. 9831A

PRODUCT FEATURES:

- Available in ABS
- High Impact Compounds
- Noncorrosive
- Tough, durable, able to withstand construction site handling
- UV inhibitors added
- Expansion coupling allows for expansion/contraction and compatibility with plastic or metallic conductors/downspouts
- Lightweight - ease of installation

Grate Free Area (Dome grate): 55 square inches
(Flat grate): 27 square inches



3689 Arrowhead Drive, Carson City, NV 89706
Phone (800) 854-3215 Fax (800) 243-1777

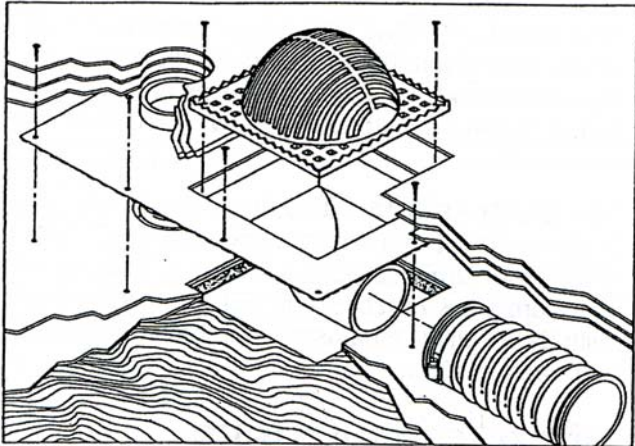
E-mail sales@lspproducts.com Website www.lspproducts.com

Content matter is subject to change at any time. It is the user's responsibility to ensure the most updated revisions are obtained.

TS/S-2003 (6-05) Rev 2

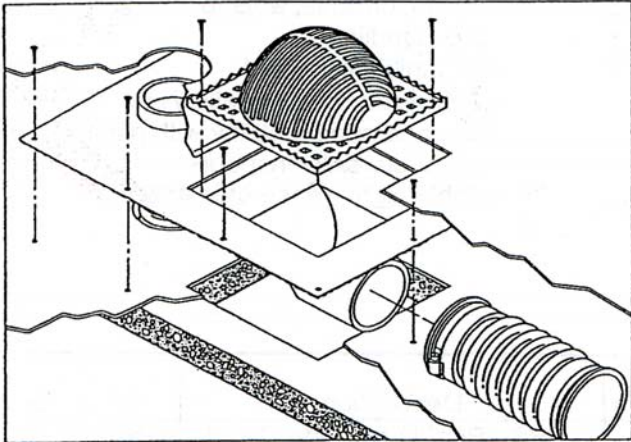
Product Submittal	
Job Name	
Date	
Part Number	Quantity
Architect	
Contractor	

**PLASTIC SIDE-OUTLET ROOF
DRAIN WITH OVERFLOW**
Specification Sheet



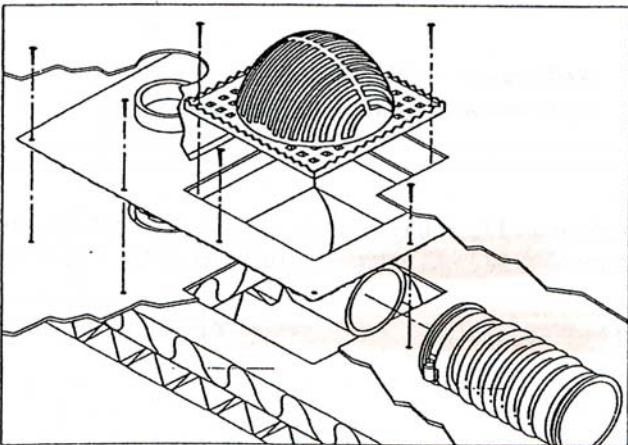
FLASHING DETAIL FOR BUILT-UP ROOF SYSTEMS

1. Mechanically attach 2 plies of roofing ply sheet embedded in hot asphalt to substrate, ensure the plies extend 18" past underlying portion of drain flange.
2. On under portion of drain flange embed 1/3" roofing mastic.
3. Securely fasten drain flange to substrate using appropriate fasteners.
4. For best results, clean drain flange with damp cloth. It is not necessary to use asphalt primer.
5. Begin B.U.R. system embedding alternate layers of roofing ply sheet down into sump and over flange. Note: Ensure asphalt is at temperature between 430°F and 475°F.
6. Secure grate in place with provided hardware.
7. Complete roof system with specified surfacing as required



**FLASHING DETAIL FOR MODIFIED
SINGLE-PLY ROOF SYSTEMS**

1. Place reversed sheet of modified over drain hole opening on substrate to ensure that ply sheet extends 18" past underling portion of drain flange.
2. Place drain on hot modified ply and secure drain flange to roof substrate using appropriate fasteners.
3. Ensure top portion of drain flange is clean of dust or any foreign substance such as primer.
4. Back burn modified ply sheet, begin roof system and start down into sump and over flange. Note: Avoid direct contact with heat torch to drain or body flange.
5. Secure grate in place with provided hardware.
6. Complete modified system with specified surfacing as required.



**FLASHING DETAIL FOR E.P.D.M. OR
RUBBER SINGLE-PLY ROOF SYSTEMS**

1. Place single-ply sheet over drain hole opening on substrate; ensure that ply sheet extends 18" past underlying portion of receiving drain flange.
2. On under portion of drain flange embed 1/3" of specified adhesive.
3. Securely fasten drain flange to substrate using appropriate fasteners.
4. Embed single-ply sheet in specified adhesive down into sump and over top portion of flange.
5. Secure grate in place with provided hardware.
6. Complete single-ply system with specified surfacing as required.



3689 Arrowhead Drive, Carson City, NV 89706

Phone (800) 854-3215 Fax (800) 243-1777

E-mail sales@lspproducts.com Website www.lspproducts.com

Content matter is subject to change at any time. It is the user's responsibility to ensure the most updated revisions are obtained.

TS/S-2003 (6-05) Rev 2

Product Submittal	
Job Name	
Date	
Part Number	Quantity
Architect	
Contractor	