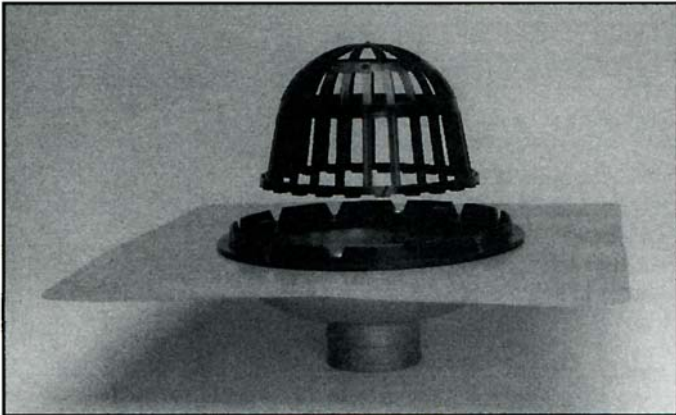


COPPER ROOF DRAIN Specification Sheet



PART NO.	DESCRIPTION
T-0280	2" Copper Roof Drain
T-0281	3" Copper Roof Drain
T-0282	4" Copper Roof Drain

MATERIAL FEATURES

- Noncorrosive plastic grate and adapter clamp.
- Entire drain and flange is made with 100% copper
- No-hub adaptor is made of 100% brass

ADDITIONAL DESIGN FEATURES

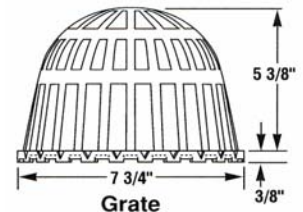
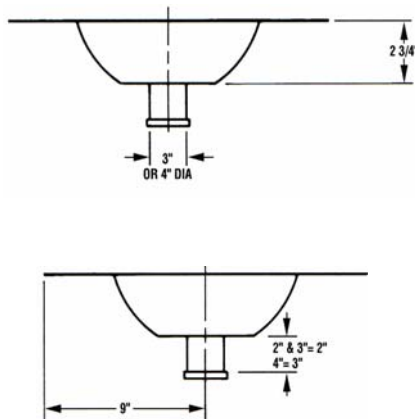
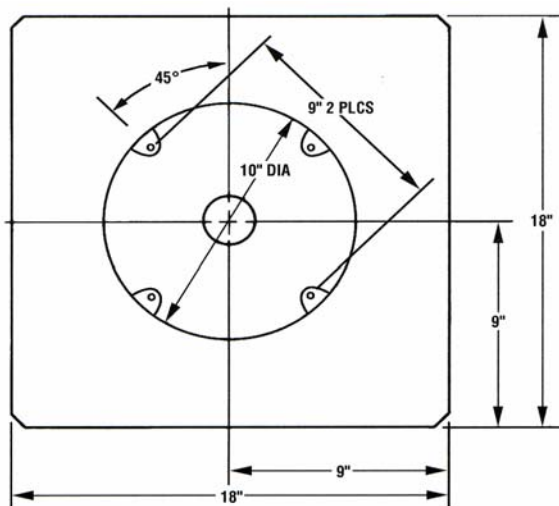
- Roof drain available in 2", 3" and 4" pipe sizes.
- Drain and flange size is 18" W x 18" L.
- Round 10" copper seamless drain basin.
- 52 square inches of open area on grate.
- Sand blasted flange finish for excellent asphalt adhesion
- Excellent adhesion to torch-applied, modified roof systems and B.U.R. systems

SPECIFICATION

Furnish and install Tech Specialties Copper Roof and Balcony Drain and flashing area in one unit, all manufactured by Tech Specialties or approved equal.

ACCEPTANCES/LISTINGS

Plumbing Safety I.A.P.M.O. File No. 2998.S.B.C.C.I Report No. 9831A



3689 Arrowhead Drive, Carson City, NV 89706

Phone (800) 854-3215 Fax (800) 243-1777

E-mail sales@lspproducts.com Website www.lspproducts.com

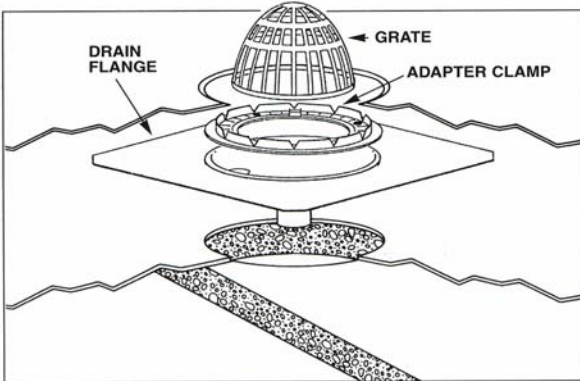
Content matter is subject to change at any time. It is the user's responsibility to ensure the most updated revisions are obtained.

TS/S-2008 (5-05) Rev 2

Product Submittal

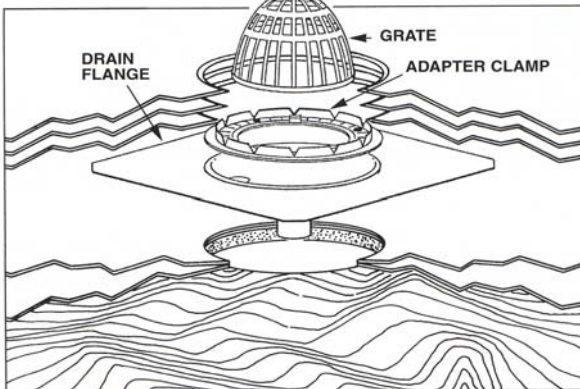
Job Name	
Date	
Part Number	Quantity
Architect	
Contractor	

FLASHING DETAIL FOR BUILD-UP ROOF SYSTEMS



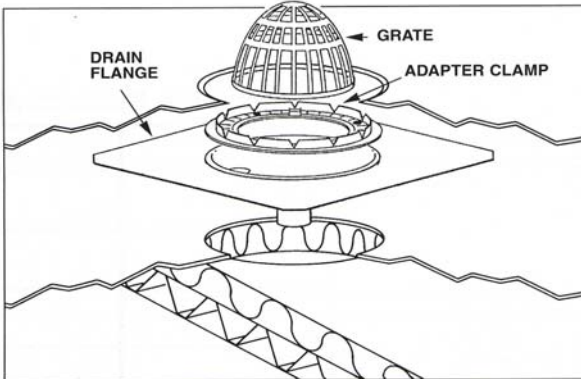
1. Mechanically attach 2 plies of roofing ply sheet embedded in hot asphalt to substrate, ensure the plies extend 18" past underlying portion of drain flange.
2. On under portion of drain flange, embed 1/3" layer, evenly spread roofing mastic compound.
3. Securely fasten drain flange to substrate, using appropriate fasteners.
4. For best results, prime drain flange with asphalt primer. Allow ample drying time.
5. Begin B.U.R. system embedding alternate layers of roofing ply sheet in a feathering application down into sump and over flange. **Note:** Ensure asphalt is at a temperature range between 430°F and 475°F.
6. Secure adapter clamp and grate in place with provided hardware.
7. Complete roof system with specified surfacing as required

FLASHING DETAIL FOR MODIFIED SINGLE-PLY ROOF SYSTEMS



1. Place reversed sheet of modified ply over drain hole opening on substrate. Ensure that ply sheet extends 18" past underlying portion of drain flange. **Note:** Recommend asphalt primer on under portion of drain flange be applied beforehand.
2. Place drain on hot modified ply and secure drain flange to roof substrate using appropriate fasteners.
3. For best results, prime top portion of drain flange with asphalt primer. Allow ample drying time.
4. Back burn modified ply sheet, start roof system down into sump receiver and over flange.
5. Secure adapter clamp and grate into place with provided hardware.
6. Complete modified single-ply system with specified surfacing as required.

FLASHING DETAIL FOR E.P.D.M. OR RUBBER SINGLE-PLY ROOF SYSTEMS



1. Place single-ply sheet over drain hole on substrate. Ensure that ply sheet extends 18" past underlying portion of receiving drain flange.
2. On under portion of drain flange embed 1/3" of water stop cut off.
3. Securely fasten drain flange to substrate, using appropriate fasteners.
4. Embed single-ply sheet in specified adhesive down into sump and over top portion of flange.
5. Secure adapter clamp and grate in place with provided hardware.
6. Complete single-ply system with specified surfacing as required.

LSP®
PRODUCTSGROUP

3689 Arrowhead Drive, Carson City, NV 89706

Phone (800) 854-3215 Fax (800) 243-1777

E-mail sales@lspproducts.com Website www.lspproducts.com

Content matter is subject to change at any time. It is the user's responsibility to ensure the most updated revisions are obtained.

TS/S-2008 (5-05) Rev 2

Product Submittal	
Job Name	
Date	
Part Number	Quantity
Architect	
Contractor	